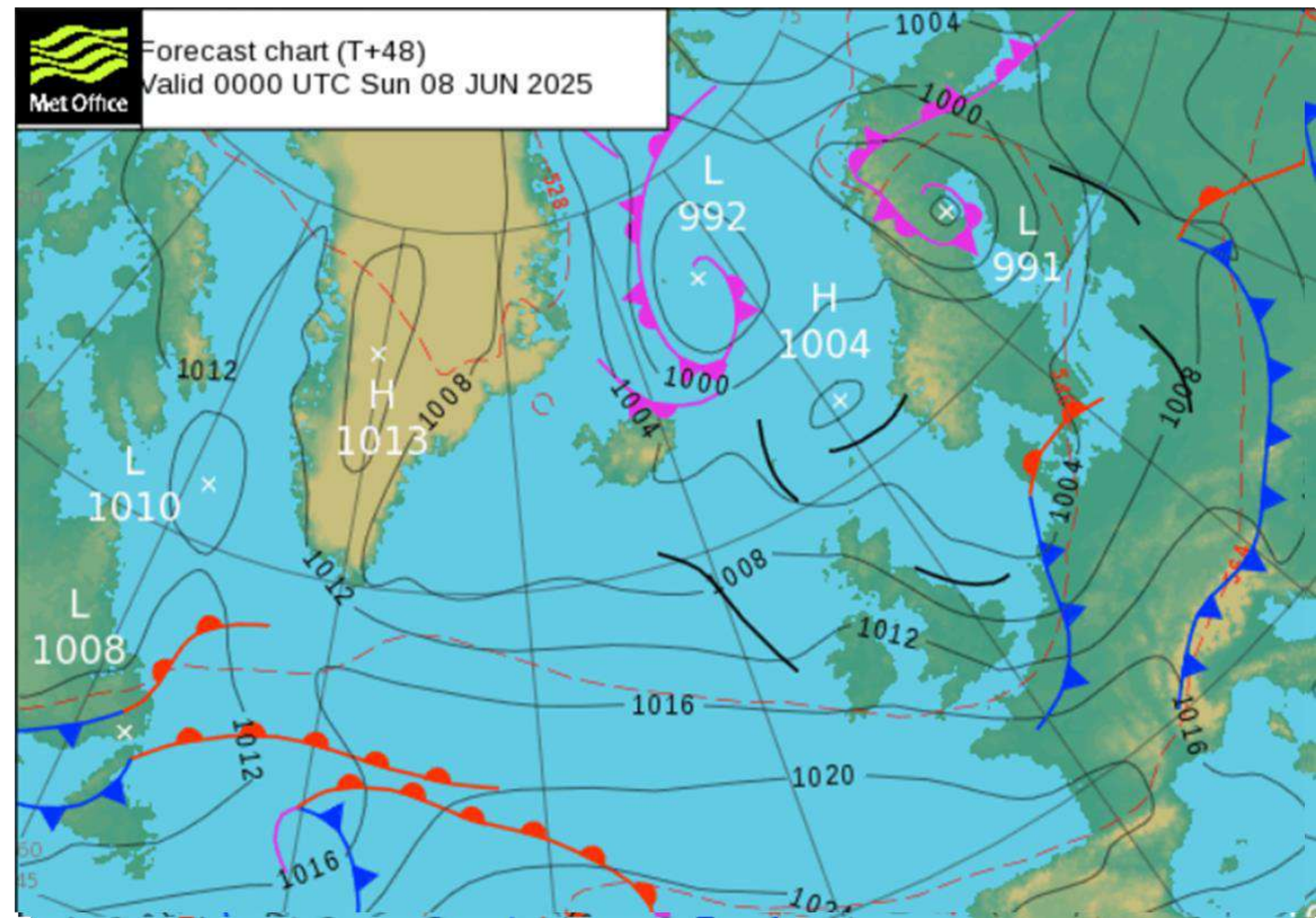


Weather Overview

- Unseasonably windy for early June
- Quick moving low pressure dominating the weather pattern bringing rain/showers – some squally/potentially thundery
- Strong and lively SW/W winds with gusts possible up to 34-36kt, especially in the afternoon, and potentially in any squally/thundery showers
- Veering W/WNW later and slowly easing – and turning drier
- Choppy/moderate seas, but potentially rough seas round the back of the island



Weather

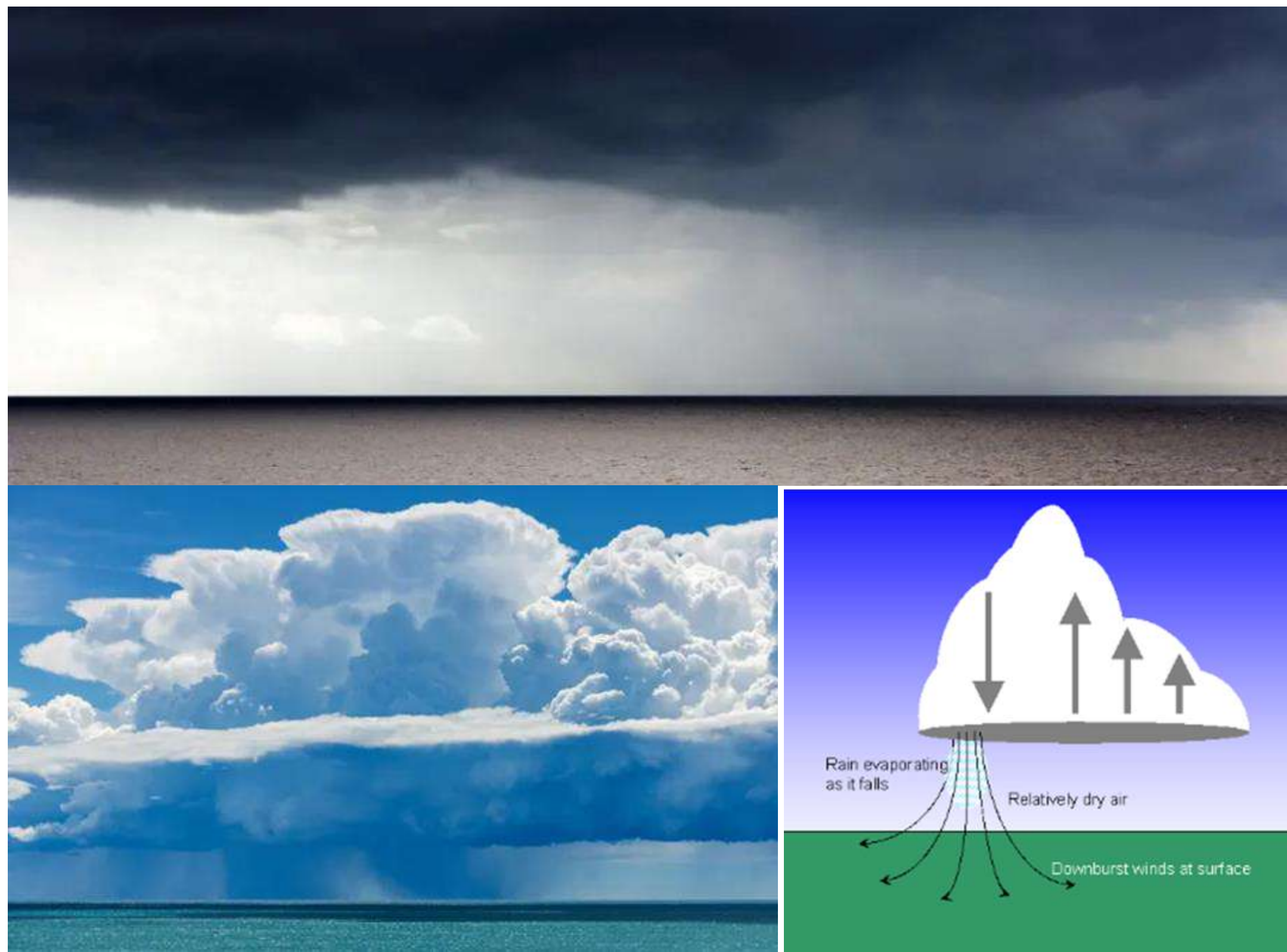
Overview

- Lots of stratus and nimbostratus, especially on and near fronts
- Spells of rain/showers, sometimes heavy
- Lively winds under these clouds, and wind shifts and increased gusts possible under darker clouds



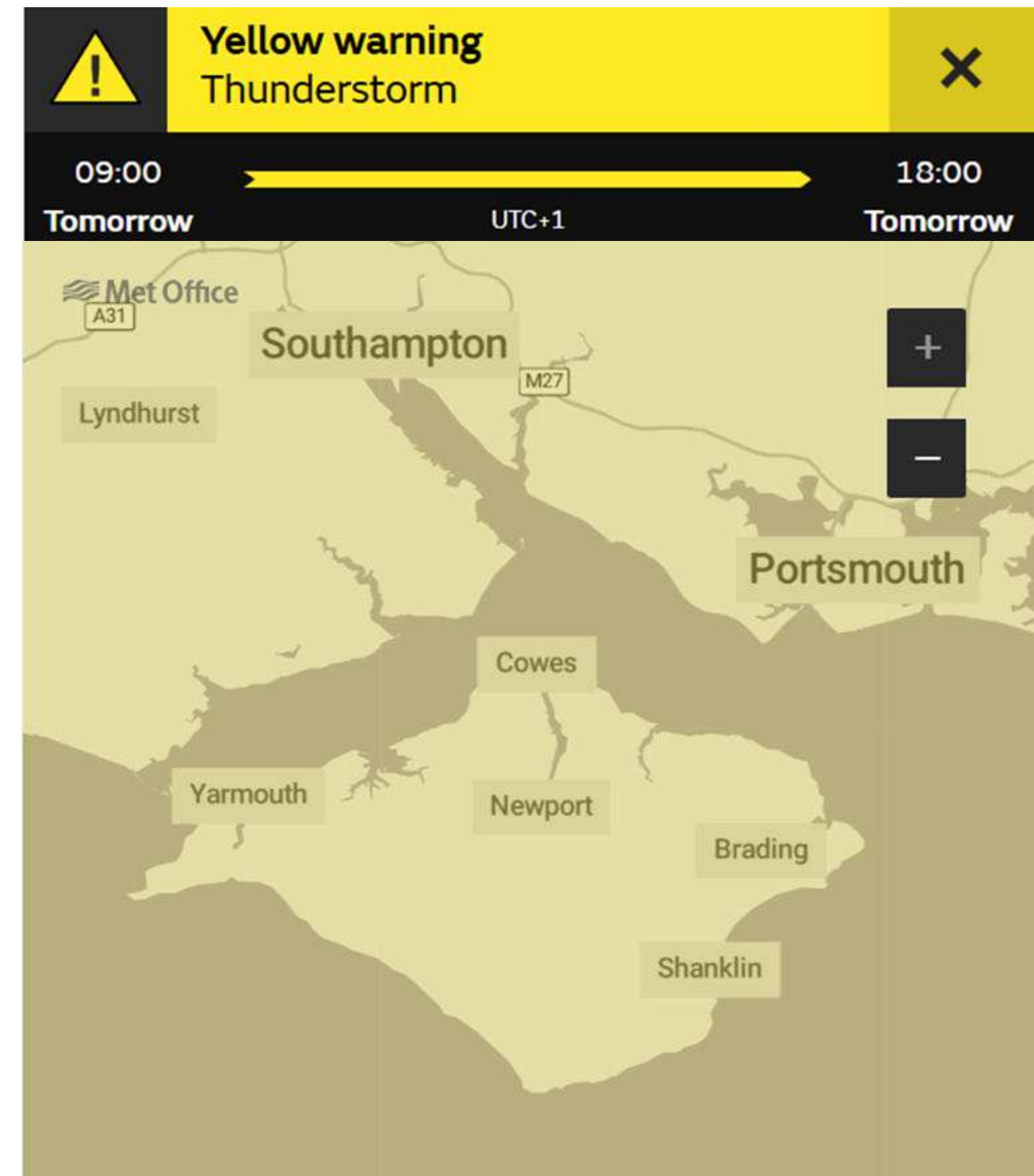
Expect shower/ thunder clouds

- Lots of cumulus – some small/some large with potential cumulonimbus. Could be embedded in other cloud...
- ...if you can see the cloud – check distance of base to top of cloud – if larger than distance between sea and the cloud base – likely to get a shower/potentially squally and/or thundery
- Increase in gust speeds and wind direction shifts, especially in showers/potentially squally and/or thundery
- Ragged base under large clouds indicates strong gusts and large wind shifts (due to downdrafts)



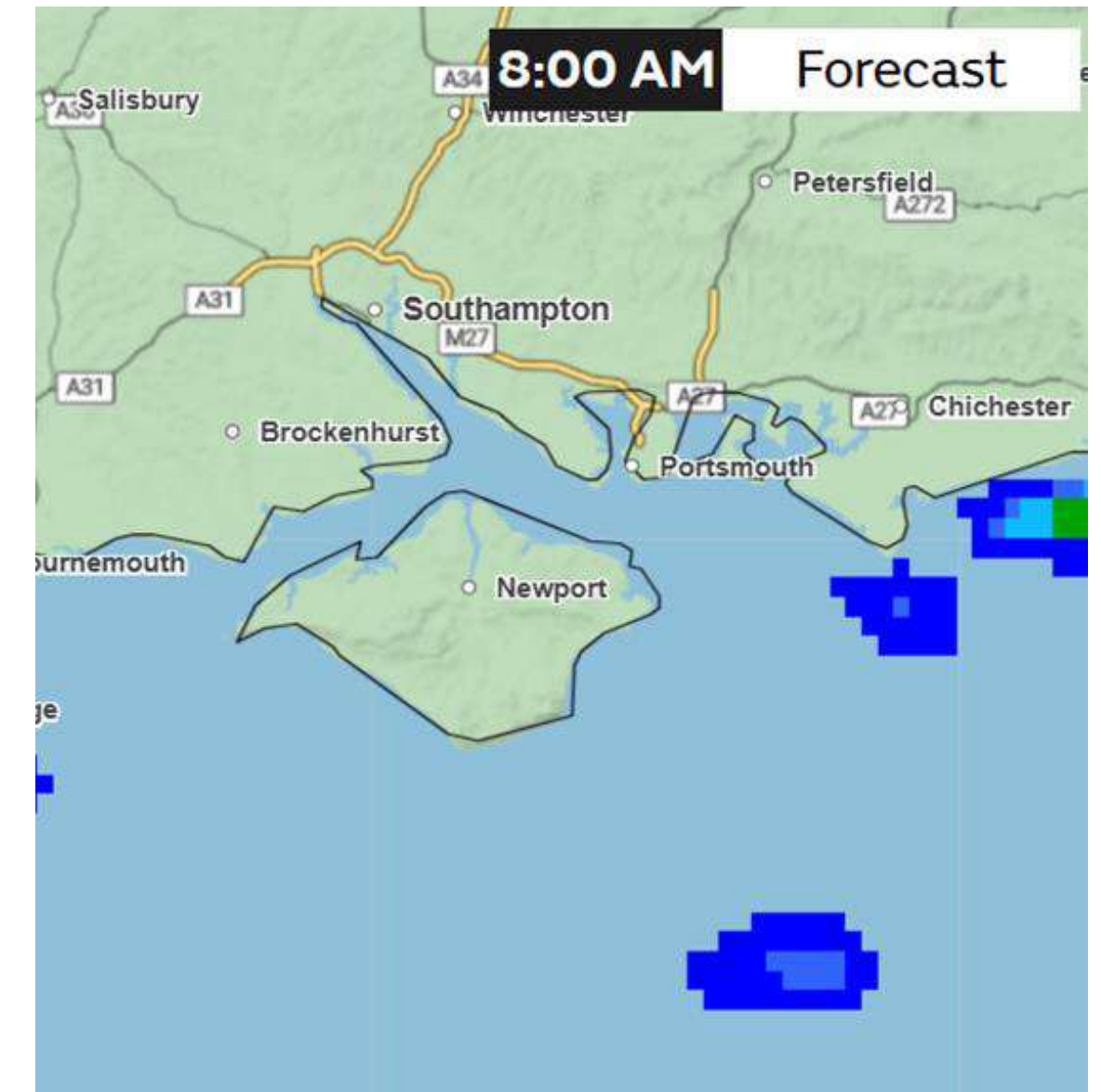
Weather overview - thunderstorm warning

- Low level thunderstorm warning, including potential for lightning/hail/squally winds
- Between 09:00 and 18:00 on Saturday for whole of IoW and surrounding waters
- Large cumulus and cumulonimbus clouds expected – but maybe embedded in other cloud – so may not see them
- Potential squally and strong winds with any heavy/thundery showers, with sudden increases in winds with lulls possible in between
- Dramatic wind shifts are possible too – especially in with squally gusts/lulls
- Sudden increase in seas too are possible



Start weather

- **Winds:** 225-260 8-12kt gusts 15-22kt, increasing 225-250 12-15kt gusts 20-25kt, especially in any heavier rain/showers
- **Weather:** Spells of rain/showers, heavy at times. Low cloud at times too, with visibility sometimes dipping down in any heavier rain
- **Sea State:** Mainly wind with flood tide, but still possible choppy and moderate seas, especially when wind over tide from 08:50, as ebb tide sets in
- **Tide:** High tide 08:50 at Cowes



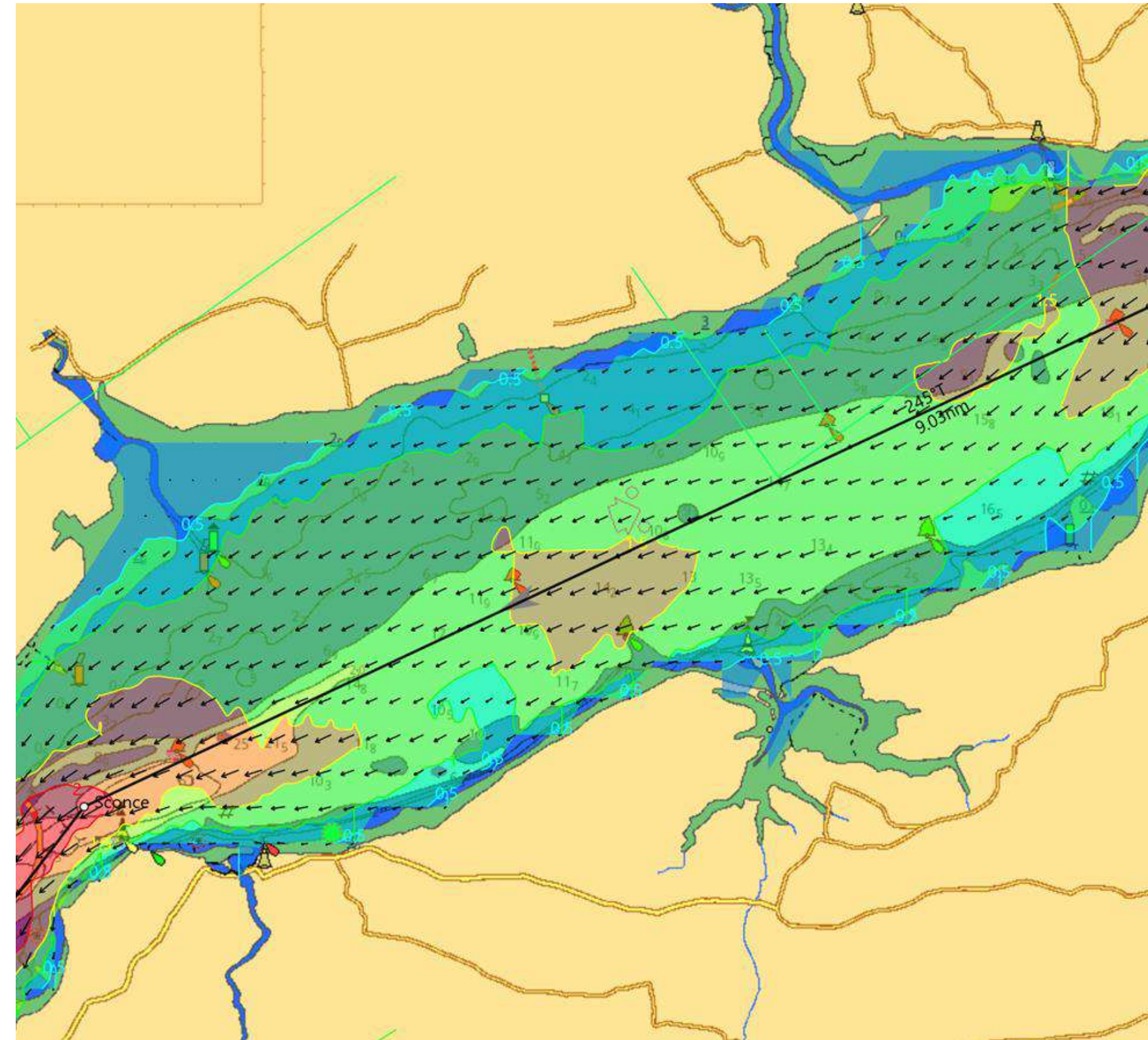
Stage 1 - Weather

- **Winds:** 225-260 10-15kt gusts 15-22kt, increasing by noon to 230-260 18-25kt with gusts up to 30kt, especially in any heavier rain/showers
- Under and around big showers – potential for sharp changes in wind speed – both up and down – and in direction
- **Weather:** Rain/showers at times, some heavy/possibly squally and thundery
- **Sea State:** Wind with flood tide until high tide, then wind over ebb tide resulting in choppy and moderate seas, especially Hurst Narrows and The Needles
- **Tide:** High tide at Cowes 08:50 and 09:07 at Hurst Narrows



Stage 1 - Tactics

- Traffic Management: often busiest part of the course
- Current: all fleets should have positive current for the whole leg
- Hazards: Varvassi & Goose Rock



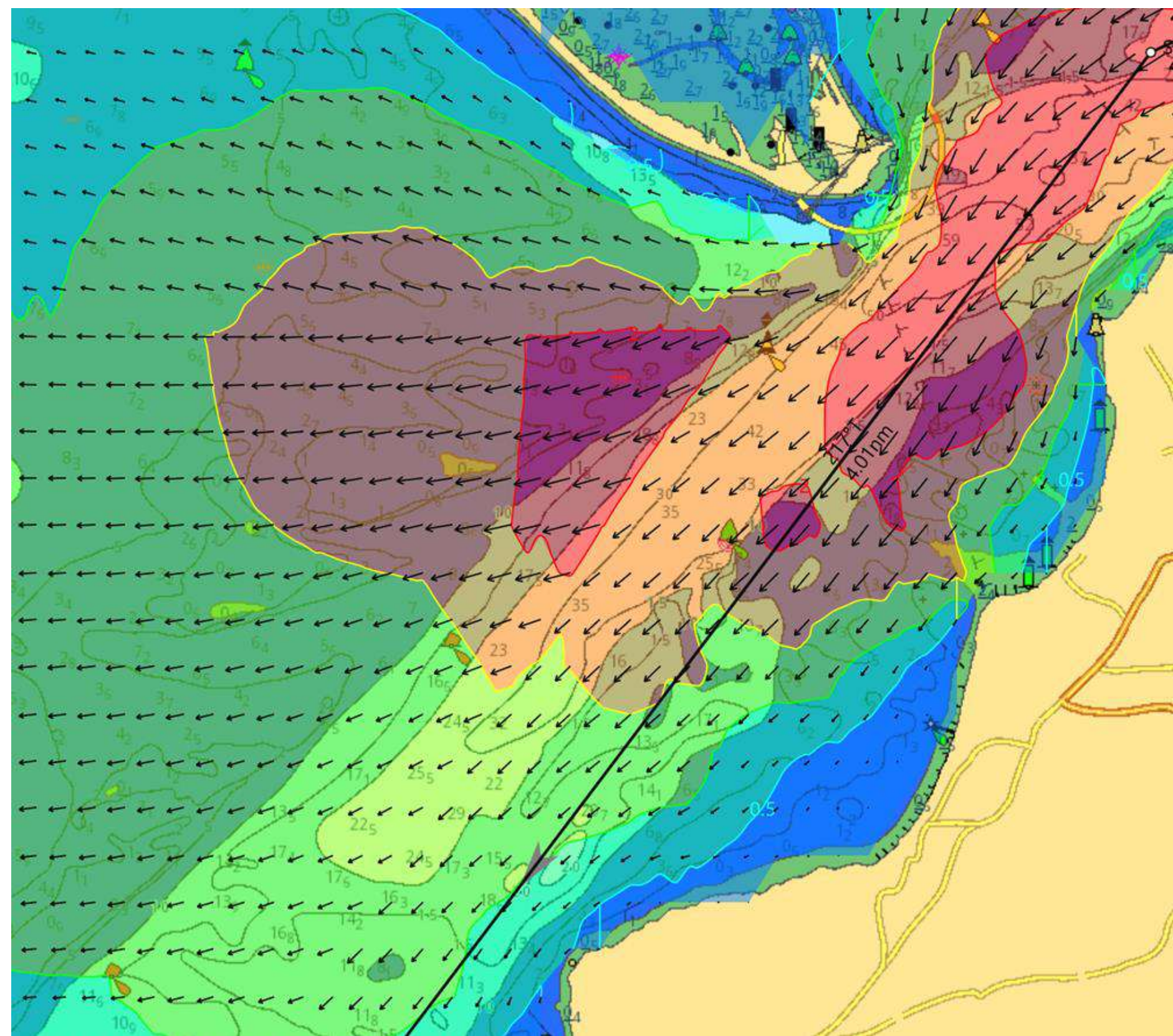
Stage 1 - Tactics

Current

West-going current from 0530
BST – 1130 BST

Stay in deep water for strongest
current

Easy to overstand the needles



Stage 1 - Tactics

Gap of 70m between wreck of Varvassi & Goose Rock

Very dangerous in windy conditions





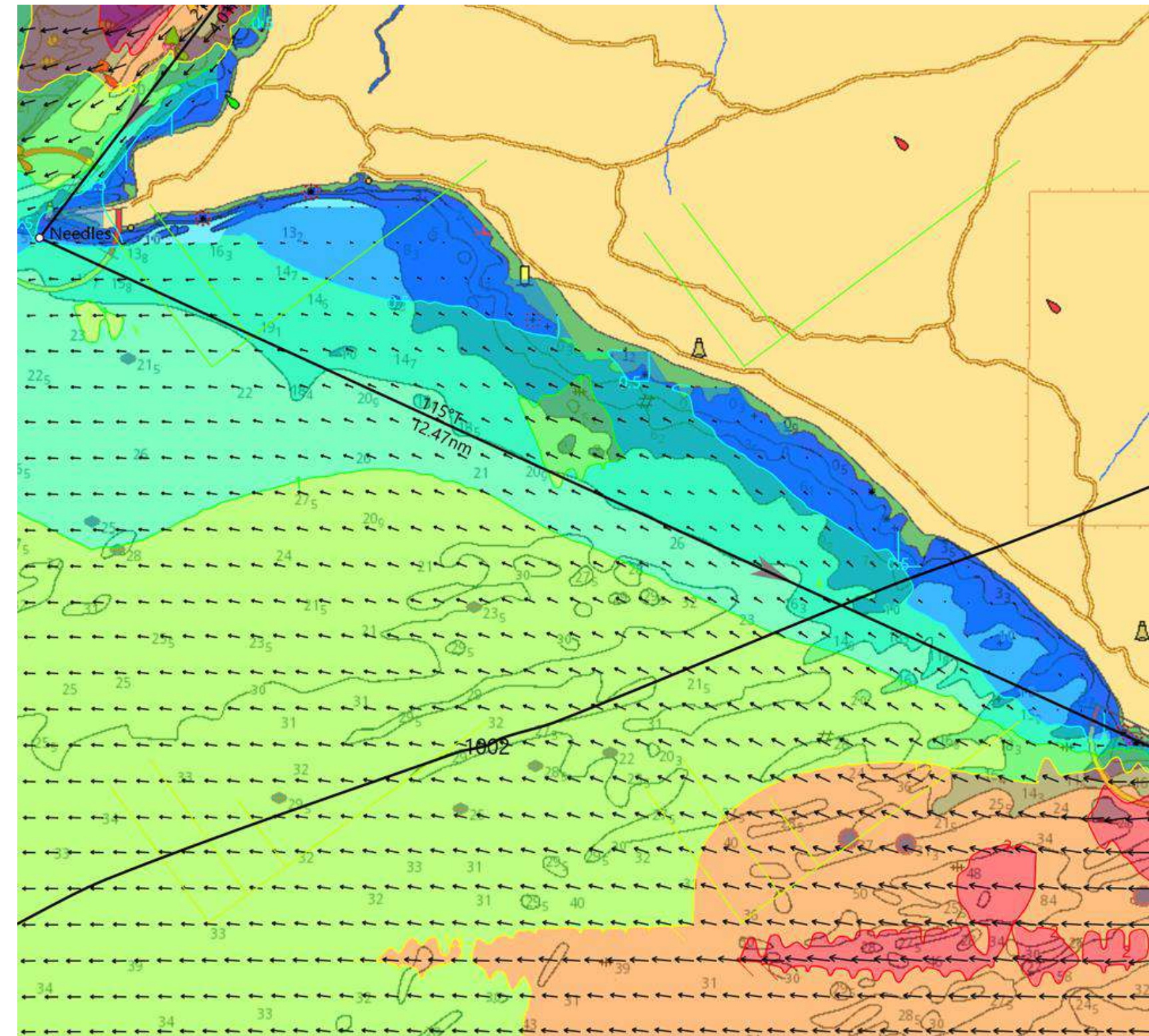
Stage 2 - Weather

- **Winds:** 230-260 12-18kt gusts 20-28kt, increasing by noon 230-260 16-22kt gusts 28-32kt, increasing further in afternoon 230-260 18-26kt, gusts 32-36kt, especially in any heavier rain/showers. Late afternoon/early evening veering 250-290 easing 14-20kt with gusts 26-32 kt and further slow easing through evening
- Under/around big showers – potential for sharp changes in wind speed – both up and down – and in direction
- **Weather:** Mix of cloud, sun, rain and showers – potentially squally/heavy/thundery
- **Sea State:** Choppy/moderate or rough seas, especially over St Catherines Point overfalls
- **Tide:** High tide 09:07 at Hurst Narrows and 08:56 at Freshwater Bay. Low tide 14:28 at Hurst Narrows and 14:41 at Freshwater Bay



Stage 2 - Tactics

- **Rhumblines:** shortest distance vs stay out of bad current
- **Traps:** be aware of ledges
- **Laying St Cats:** may need to drop spinnakers to lay the headland



Stage 3 - Weather

- **Winds:** 230-260 12-18kt gusts 20-28kt, increasing by noon 230-260 16-22kt gusts 28-32kt, increasing further in afternoon 230-260 18-26kt, 32-36kt, especially in any heavier rain/showers. Late afternoon/early evening veering 250-290 easing 16-24kt with gusts 30-32 kt and further easing through evening. Potential local increase between St Catherine's Point and Dunnose, and in Sandown Bay too – due to wind funneling through land gaps. Alternative in Sandown Bay – wind bends if wind turns to left
- Late afternoon/early evening veering 250-290 easing 14-20kt with gusts 26-32kt and further easing through evening
- Under/around big showers – potential for sharp changes in wind speed – both up and down – and in direction
- **Weather:** Mix of cloud, sun, rain/showers – potentially squally/heavy/thundery
- **Sea State:** Choppy/moderate or rough seas, especially around Dunnose, Culver Cliff and Bembridge Ledge/Foreland
- **Tide:** High tide 09:16 at Ventnor and 09:41 at Bembridge Foreland. Low tide 14:28 at Ventnor and 15:03 at Bembridge Foreland

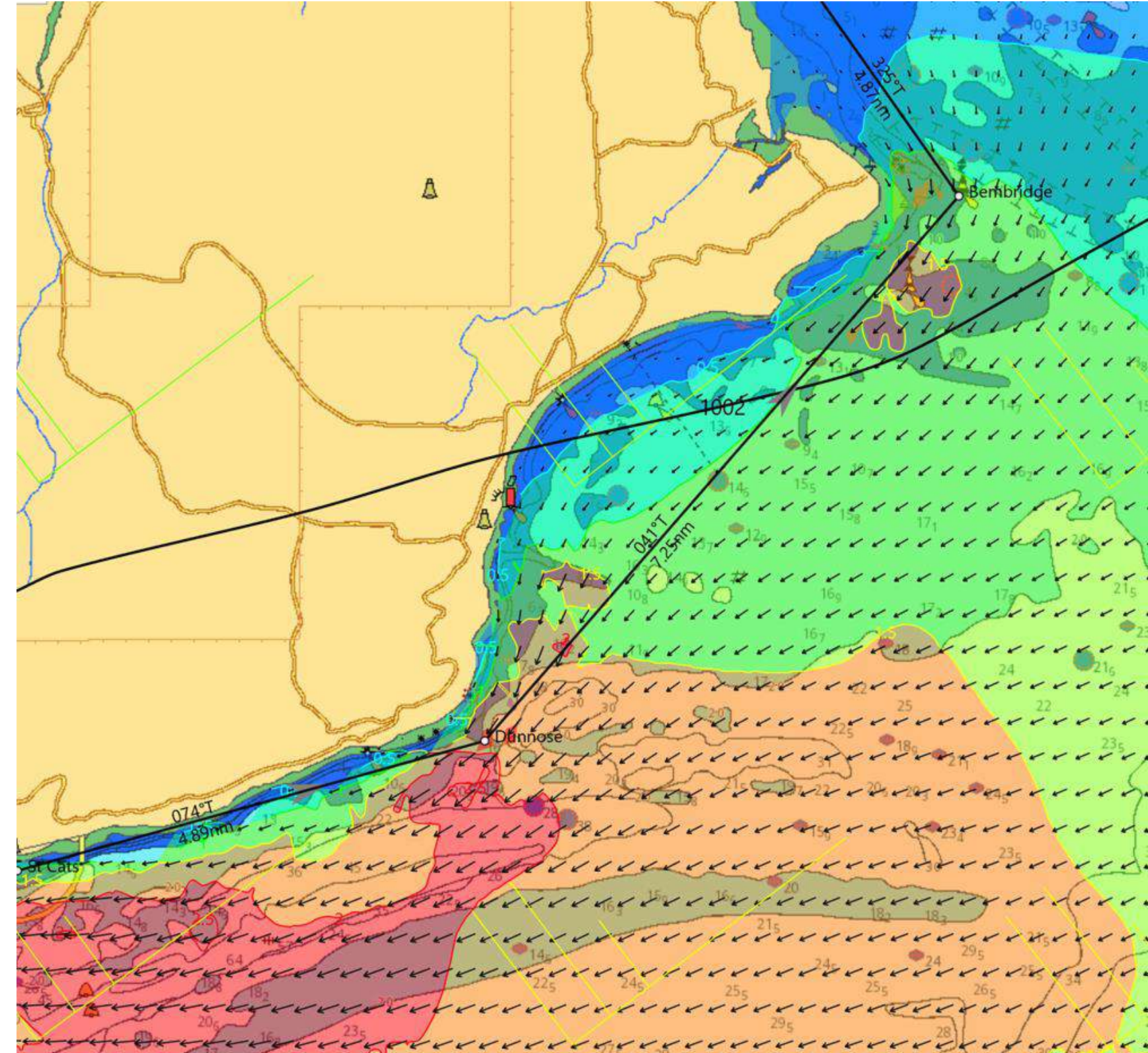
Stage 3 - Weather

- **Winds:** 230-260 12-18kt gusts 20-28kt, increasing by noon 230-260 14-22kt gusts 24-30kt, possibly increasing further in afternoon 230-260 16-25kt, gusts 28-32kt, especially in any heavier rain/showers. A bit more unstable too coming across the island, so gusty through gaps/valleys – eg Wootton Creek and The Medina
- Late afternoon/early evening veering 250-290 easing 12-16kt with gusts 24-28 kt and further easing through evening.
- Under/around big showers – potential for sharp changes in wind speed – both up and down – and in direction
- **Weather:** Mix of cloud, sun, rain/showers – potentially squally/heavy/thundery
- **Sea State:** Choppy/moderate seas, especially over Ryde Sands and Bramble Bank
- **Tide:** First High tide 09:34 at Ryde and 08:50 at Cowes. Low tide 14:51 at Ryde and 14:58 at Cowes. Second High tide 21:58 at Ryde and 21:14 at Cowes.



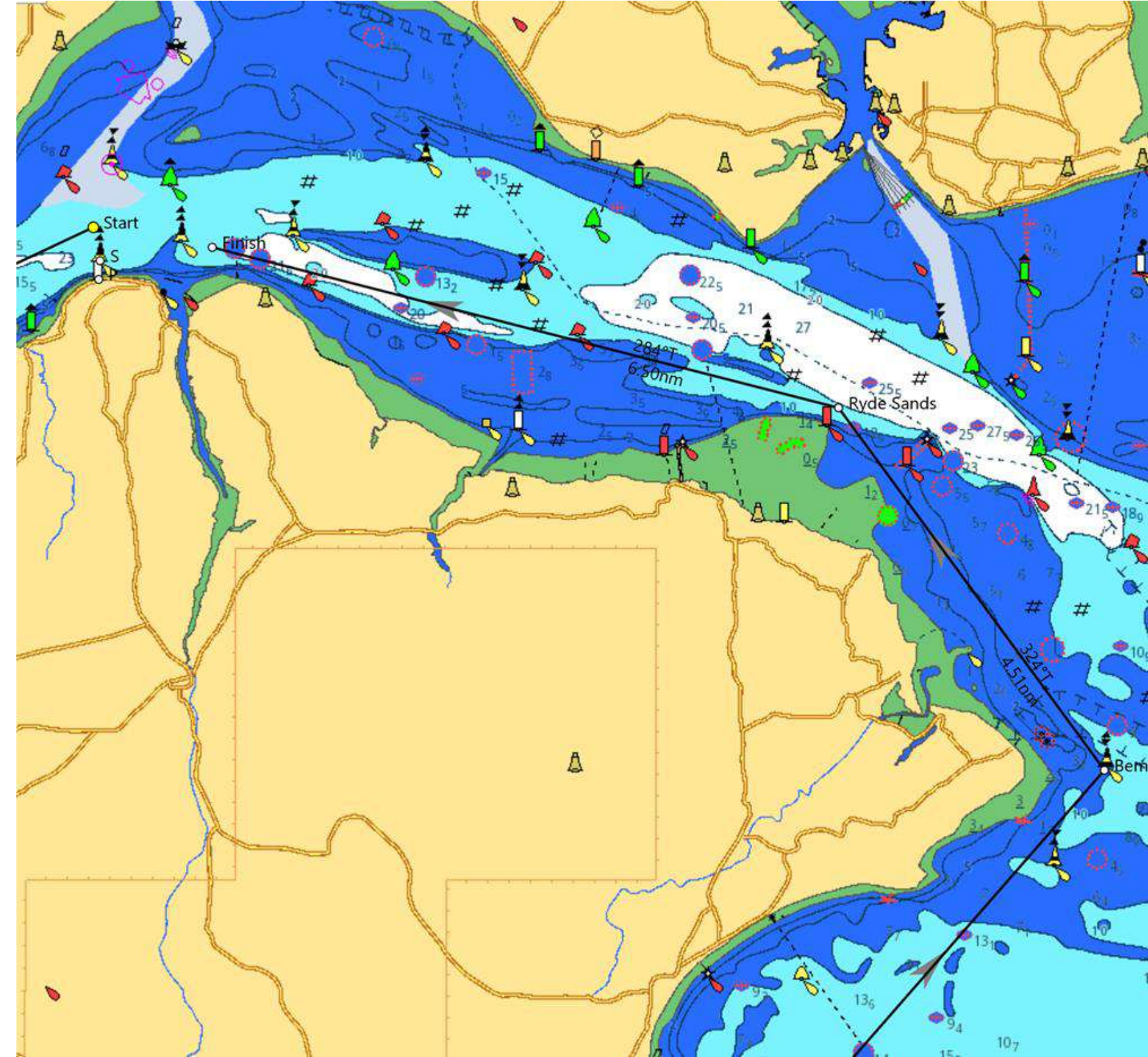
Stage 3 - Tactics

- Probably the most complicated part of the race
- **St Cats to Dunnose:** lots of tide relief inshore
- **Sandown Bay:** inshore or offshore?



Stage 4 - Tactics

- **Gusty:** Reach from Bembridge Ledge to Ryde sands can be very gusty
- **Seaview Exclusion Zone:** can't pass inside the moorings
- **Current:** against current for most boats
- **Ryde Sands:** Easy to run aground



Summary

Winds: Start 225-260 8-12kt gusts 15-22kt, increasing 225-250 12-15kt gusts 20-25kt, especially in any heavier rain/showers

Winds: During race 225-250 12-15kt gusts 20-25kt, becoming 230-260 12-18kt gusts 20-28kt, increasing by noon 230-260 16-22kt gusts 28-32kt, increasing further in afternoon, especially around the back of the island, 230-260 18-26kt, gusts 32-36kt, especially in any heavier rain/showers. Late afternoon/early evening veering 250-290 slowly easing 12-20kt with gusts 24-32kt and further easing through evening

Sea state: Choppy/moderate in Solent 0.8-2.2m, choppy/moderate or rough round back of Island 2.0-3.0m

Weather: Mix of cloud, sun, rain/showers – potentially squally/heavy/thundery

Temperatures: Inland – 15 to 17 Celsius, Sea – 14 to 16 Celsius, Sea Surface – 14/15 Celsius



Thank
you



